



Ci50R

Information Sheet



Imagine a speaker that's no more obtrusive than a standard 50mm (2") low voltage downlighter, yet powerful enough to flood a sizeable space with high definition sound and designed to smoothly integrate and architecturally match with existing downlighting. Impressively vocal and superbly balanced, the Ci50R is a masterpiece of intelligent miniaturisation - and thanks to the design and specification

of the drive unit, a deceptively accomplished performer in real rooms. It is available with White, Chrome, Brass or Brushed Steel bezels to suit your tastes and décor. As visually discreet as a speaker can possibly be, the Ci50R delivers the listening pleasure to match its outstanding value for all but the most demanding installations. Small is beautiful.

Features and Benefits:

Purpose-built for flush mounting into walls and ceilings, the Ci50R delivers KEF audio quality as unobtrusively as possible, and with KEF's standard lighting style fitting, you'll also find them amazingly easy and rapid to install.

Ci series
custom installation speakers

KEF Audio (UK), Eccleston Road, Tovil, Maidstone, Kent, ME15 6QP U.K. Telephone: + 44 (0) 1622 672261. Fax: + 44 (0) 1622 750653

KEF America, 10 Timber Lane, Marlboro, New Jersey, 07746 USA. Telephone: + 1 732 683 2356. Fax: + 1 732 683 2358

GP Acoustics GmbH, Heinrichstraße 51, D-44536 Lünen, Deutschland. Telephone: +49 (0) 231 9860-320. Fax: +49 (0) 231 9860-330.

KEF®

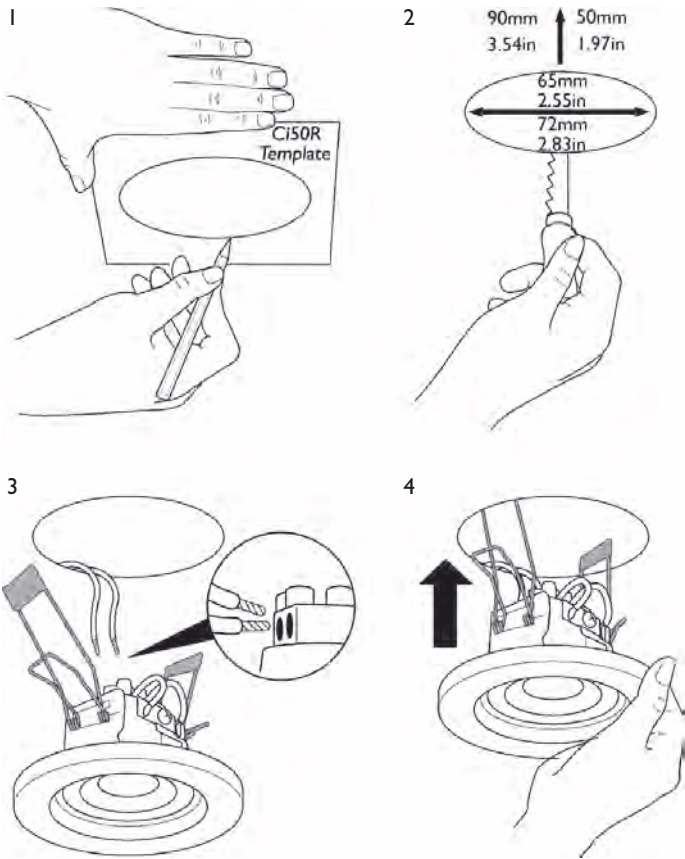
www.kef.com

www.kefamerica.com

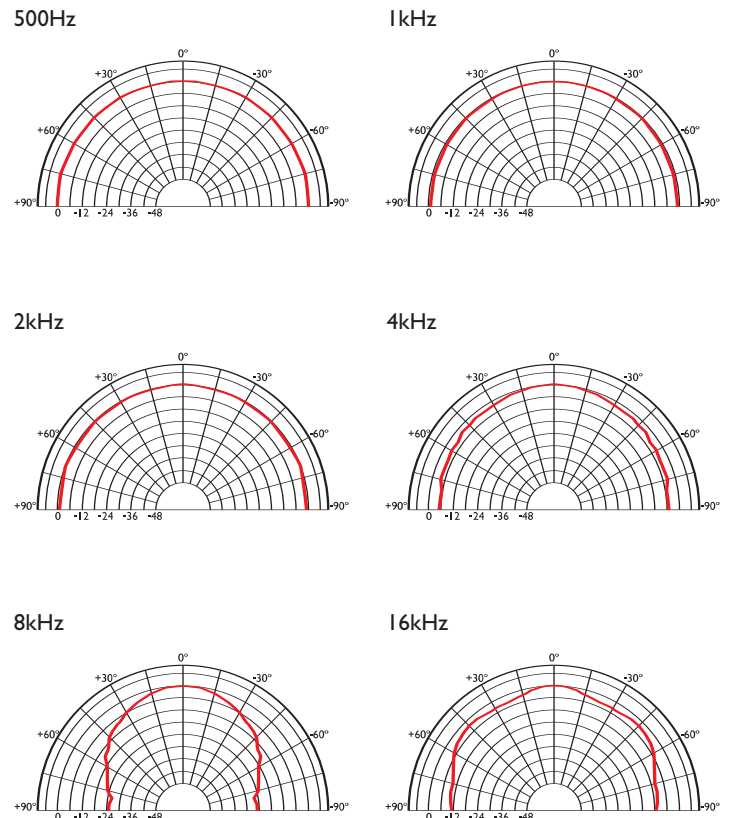
www.kefaudio.de

Ci50R

Installation



Polar graphs



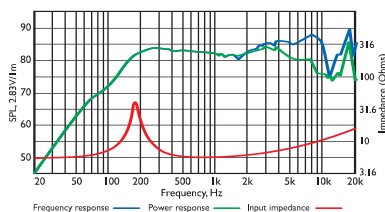
Architectural specifications:

The Ci Series Ci50R comprises a 50mm full range speaker. Performance should meet or exceed the following criteria: frequency response 1 metre on-axis with swept sinewave shall be 155Hz to 20kHz, system sensitivity shall be at least 82dB

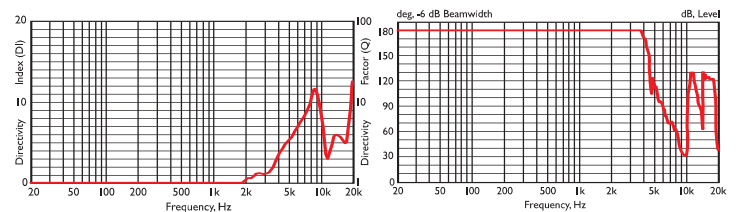
for 2.83V@1m. The driver impedance shall be 6 ohms. The Ci Series Ci50R is best suited for plastered or suspended ceilings where high quality background music and speech reinforcement applications require hi-fi performance such as:

- Multi Room systems.
- Lounges, Bars, Boutiques.
- Boardrooms & Offices.

Frequency / Power response, Input impedance



Directivity Index / Beamwidth



Specifications

Frequency range	155Hz - 20kHz
Sensitivity (2.83v @ 1m)	82dB
Rec. amplifier power	10 - 30W
Nominal Impedance	6Ω (min. 5.5Ω)
Crossover Frequency	N/A

Enclosure material	N/A
Terminals	terminal blocks up to Ø2.5mm (0.1") conductor
Dimensions (Ø x depth)	Ø80mm x 55 mm, 3 x 2.25 in.
Net weight	0.135kg (0.3lbs)